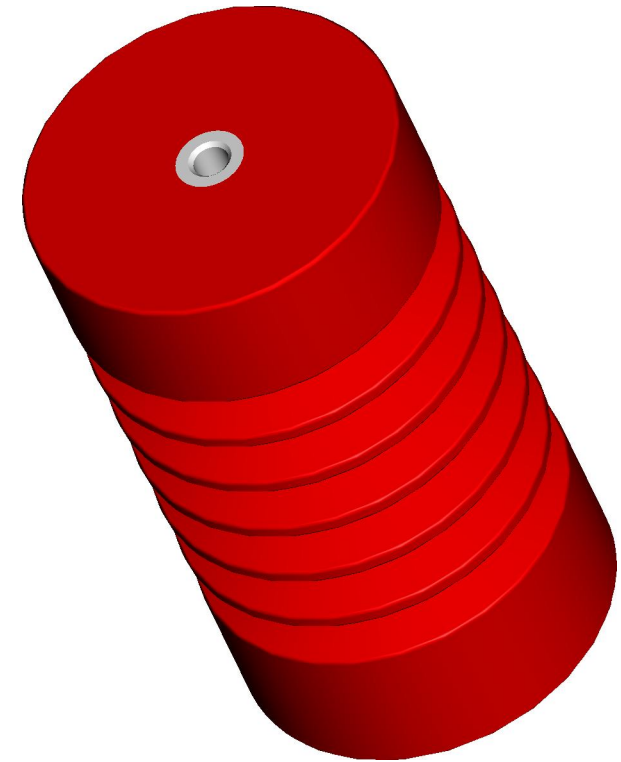
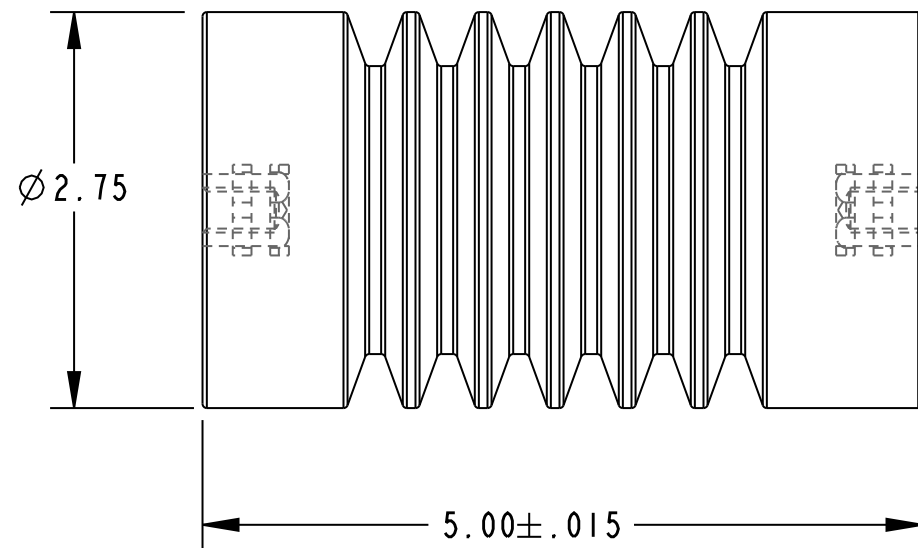


SEE TABLE FOR
INSERT SIZES



OVER SURFACE SPACING
(CREEP DISTANCE) = 10.13"

AVAILABLE THREADS		
UNC THREAD STYLES		
PART NUMBER	INSERT SIZE	MATERIAL
6500-S6	1/2-13 X 5/8	STEEL
6500-S10	3/8-16 X 5/8	STEEL

BRASS INSERTS AND OTHER INSERT
SIZES AND COMBINATIONS ARE
AVAILABLE UPON SPECIAL REQUEST

CONFIDENTIAL
This print and the
specifications are the
property of Mar-Bal Inc.
and has been issued with
the understanding that it
will not be reproduced,
revealed to or used for
manufacture for others,
and will be returned upon
request.

DATE: 20-AUG-2008



MAR-BAL, Incorporated
5400 Reserve Way
Dublin, VA 24084
www.mar-bal.com

TITLE	
6000 SERIES ROUND INSULATOR	
PART NUMBER:	SUGGESTED INDOOR RATING:
6500-XX	7.5 kV
SHEET 1 OF 1	SCALE 0.750