

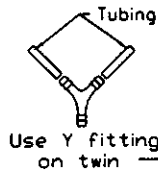
FOR OPTIMUM PERFORMANCE AND LIFE, MOUNT THE HORN SO THAT TUMPETS POINT DOWN 5 DEGREES MINIMUM (FOR BOATS, THIS IS WHEN BOAT IS PLANNING) TO KEEP WATER OUT OF HORN

WIRING INSTRUCTIONS

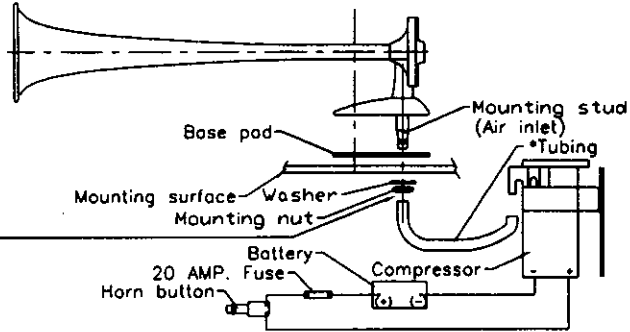
1. WHERE POSSIBLE, USE EXISTING WIRING.
2. USE FLEXIBLE STRANDED WIRE.
3. SOLDER CLIPS FOR OPTIMUM ELECTRICAL CONNECTION.
4. CUT WIRES OF SUFFICIENT LENGTH TO AVOID ANY TENSION AT CONNECTING POINTS.
5. USE WIRE AS SHOWN IN THE CHART.

| LENGTH OF WIRE | RECOM. WIRE SIZE (FOR 12v) |
|---------------------------------|----------------------------|
| 0-20 FT. (0-5 METER) | 14 AWG(1.5MM) |
| 21-40 FT. (6-10 METER) | 12 AWG(2.0MM) |
| 41-60 FT. (11-20 METER) | 10 AWG(2.6MM) |
| 61 AND OVER (21 METER AND OVER) | 8 AWG(3.2MM) |

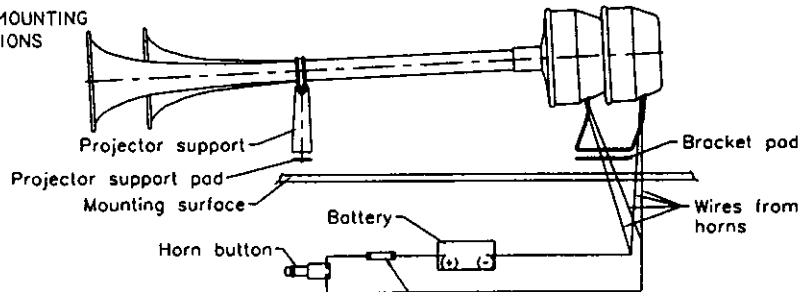
TORONADO MOUNTING INSTRUCTIONS



* Note: For optimum performance tubing length should be as short as possible.

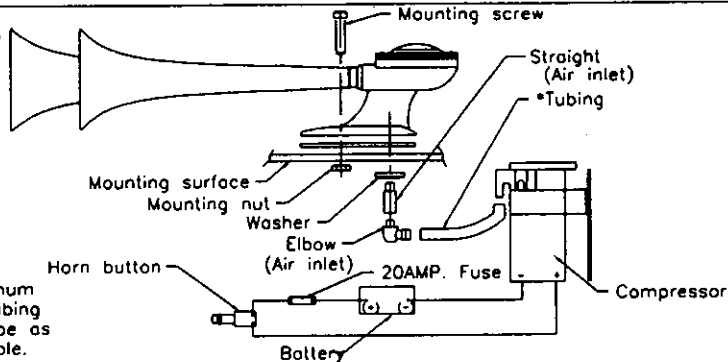


AIR TONE MOUNTING INSTRUCTIONS



Instructions for single are the same except only one horn.

FULTONE MOUNTING INSTRUCTIONS



* Note: For optimum performance tubing length should be as short as possible.