

Description

Signal devices warn, guide and protect. The type of visual and audible signals used depends on the application and the surroundings. With EvoSIGNAL, it is easier than ever before to find the signal device you need: the streamlined, modular system optimally covers practically all areas of application.

TwinLIGHT and TwinFLASH

TwinLIGHT and TwinFLASH merge two lighting functions in one element that can then be remotely operated and even configured to suit different escalation levels.

TwinLIGHT - Permanent and Blinking Lights

TwinFLASH - Flash and EVS (enhanced visibility system)

Modular Beacons

EvoSIGNAL is the new modular, simple and clear standard solution for the signaling sector.

- High protection rating IP66
- 62, 85, 120mm beacons available
- Signal modules in common voltages (115–230 VAC, 12/24 VAC/VDC, 12 VAC/VDC, 24 VAC/VDC)
- Five colors available

Beacon Accessories

Accessories for installation and freestanding beacons:

- Base mounting
- M22 installation mounting
- PG29 installation mounting
- Tube mounting
- Bracket mounting with cable gland
- Bracket mounting



Mini



Midi

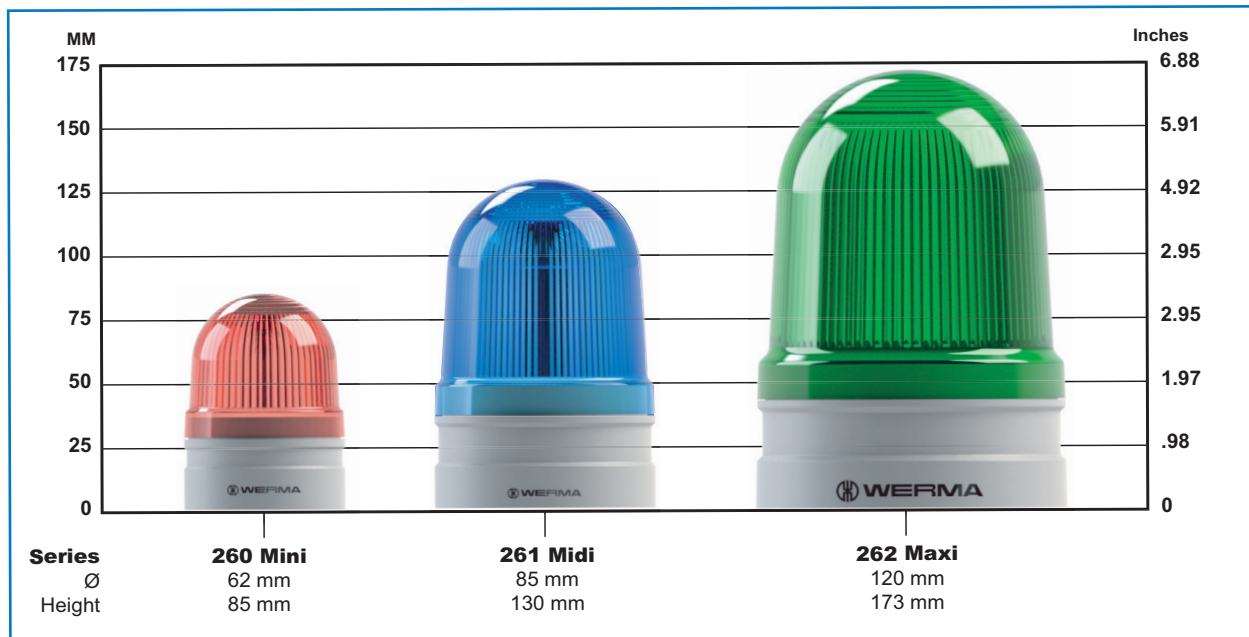


Maxi

Select your WERMA EvoSIGNAL Device

STEP 1

Select height/diameter for your application.

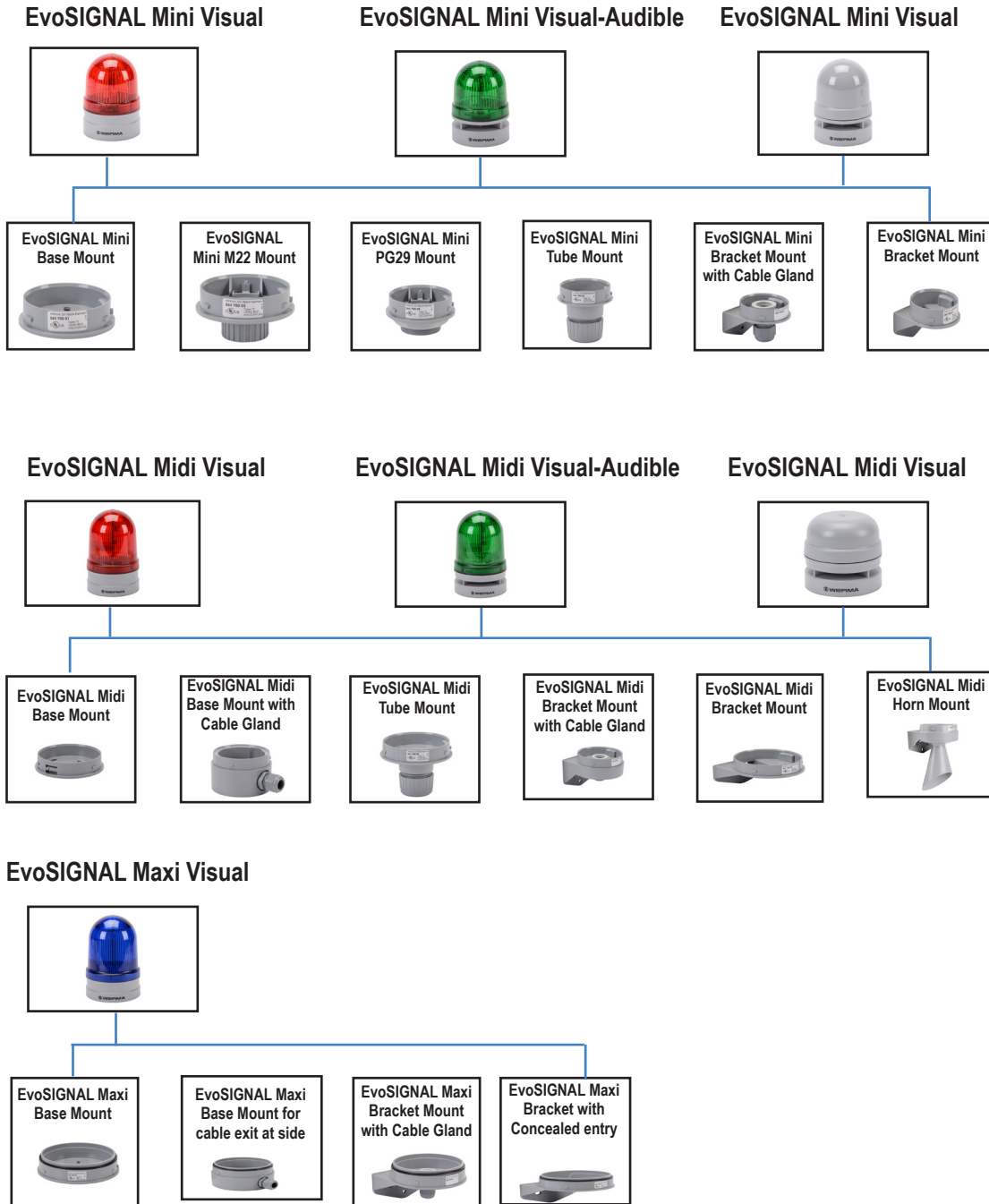




Select your WERMA EvoSIGNAL Device

STEP 2

Select your mounting adapter for the appropriate series of beacon selected.





Visual Mini 62mm Beacon EvoSIGNAL Series Overview

The EvoSIGNAL Mini Beacons are for locations that have limited space. They are available in TwinLIGHT and TwinFLASH lighting effects. Visual models available include Combi - Vertical and Audible, TriColor, and Audible Signal Horns.

Features

- Voltage ratings 115-230 VAC, 12 VAC/VDC, 24VAC/VDC
- Available in Visual, Visual-Audible, and Audible styles
- TwinLIGHT light effects
- Push-in connection terminals
- 2 year warranty
- Base, tube, bracket and wall mount options
- Requires mounting adapter - sold separately
- IP66

Agency Approvals

- cULus E164155
- CE

To obtain the most current agency approval information, see the Agency Approval Checklist section on the specific part number's web page.



26011060

46021060

Visual Mini 62mm Beacon EvoSIGNAL Selection Chart

Part Number	Price	LED Color	Drawing Link	Description	Voltage	Current	Starting/Inrush	dB Rating	Operating Temp /Protection	Life Duration	Housing Material	Weight g [oz]	Connection
Mini TwinLIGHT Visual													
26011060	\$56.00	Red	PDF	permanent or blinking (1 Hz ON for 420ms)	115-230 VAC	40mA	2.5 A	-	-22 to 140°F [-30 to 60°C] IP66 UL Type 12	50,000h minimum	Polycarbonate cap ABS/Polycarbonate blend, Gray base	71 [2.50]	Push-in Terminal 24-16 AWG
26021060	\$56.00	Green	PDF										
26031060	\$56.00	Yellow	PDF										
26041060	\$56.00	Clear	PDF										
26051060	\$56.00	Blue	PDF										
26011074	\$56.00	Red	PDF	permanent or blinking (1 Hz ON for 410ms)	12 VAC/VDC	86mA	1.0 A	-	-22 to 140°F [-30 to 60°C] IP66 UL Type 12	50,000h minimum	Polycarbonate cap ABS/Polycarbonate blend, Gray base	71 [2.50]	
26021074	\$56.00	Green	PDF										
26031074	\$56.00	Yellow	PDF										
26041074	\$56.00	Clear	PDF										
26051074	\$56.00	Blue	PDF										
26011075	\$50.00	Red	PDF	permanent or blinking (1 Hz ON for 470ms)	24 VAC/VDC	72mA	1.6 A	-	-22 to 140°F [-30 to 60°C] IP66 UL Type 12	50,000h minimum	Polycarbonate cap ABS/Polycarbonate blend, Gray base	71 [2.50]	
26021075	\$50.00	Green	PDF										
26031075	\$50.00	Yellow	PDF										
26041075	\$50.00	Clear	PDF										
26051075	\$50.00	Blue	PDF										
Mini TwinLIGHT Combi Visual - Audible													
46011060	\$103.00	Red	PDF	permanent or blinking (1 Hz ON for 420ms) 2 Tone: Continuous/Pulse	115-230 VAC	65mA	2.0 A	95dB at 1m	-22 to 140°F [-30 to 60°C] IP66 UL Type 12	50,000h minimum	Polycarbonate cap ABS/Polycarbonate blend, Gray base	78 [0.75]	Push-in Terminal 24-16 AWG
46021060	\$103.00	Green	PDF										
46031060	\$103.00	Yellow	PDF										
46041060	\$103.00	Clear	PDF										
46051060	\$103.00	Blue	PDF										
46011074	\$103.00	Red	PDF	permanent or blinking (1 Hz ON for 410ms) 2 Tone: Continuous/Pulse	12 VAC/VDC	98mA	2.0 A	95dB at 1m	-22 to 140°F [-30 to 60°C] IP66 UL Type 12	50,000h minimum	Polycarbonate cap ABS/Polycarbonate blend, Gray base	78 [2.75]	
46021074	\$103.00	Green	PDF										
46031074	\$103.00	Yellow	PDF										
46041074	\$103.00	Clear	PDF										
46051074	\$103.00	Blue	PDF										
46011075	\$89.00	Red	PDF	permanent or blinking (1 Hz ON for 470ms) 2 Tone: Continuous/Pulse	24 VAC/VDC	98mA	3.0 A	95dB at 1m	-22 to 140°F [-30 to 60°C] IP66 UL Type 12	50,000h minimum	Polycarbonate cap ABS/Polycarbonate blend, Gray base	78 [2.75]	
46021075	\$89.00	Green	PDF										
46031075	\$89.00	Yellow	PDF										
46041075	\$89.00	Clear	PDF										
46051075	\$89.00	Blue	PDF										

Requires Mounting Adapter - sold separately



Visual Mini TwinFLASH 62mm Beacon EvoSIGNAL Series

Features

- Voltage ratings 115–230 VAC, 12 VAC/VDC, 24VAC/VDC
- Available in Visual, Visual-Audible, and Audible styles
- TwinFLASH light effects
- Push-in connection terminals
- 2 year warranty
- Base, tube, bracket and wall mount options
- Requires mounting adapter - sold separately
- IP66

Agency Approvals

- cULus E164155
- CE

To obtain the most current agency approval information, see the Agency Approval Checklist section on the specific part number's web page.



26012060



46022060

Visual Mini TwinFLASH 62mm Beacon EvoSIGNAL Series Selection Chart													
Part Number	Price	LED Color	Drawing Link	Description	Voltage	Current	Starting/Inrush	dB Rating	Operating Temp /Protection	Life Duration	Housing Material	Weight g [oz]	Connection
Mini TwinFLASH Visual													
26012060	\$70.00	Red	PDF	double flash (ON 30ms, Off 160ms, ON 30ms, Off 740ms, 1 Hz flash frequency) or EVS (Enhanced Visibility System) flashing (random flashing)	115–230 VAC	40mA	2.5 A	–	-22 to 140°F [-30 to 60°C] IP66 UL Type 12	50,000h minimum	Polycarbonate cap	71 [2.50]	Push-in Terminal 24-16 AWG
26022060	\$70.00	Green	PDF								ABS/ Polycarbonate blend, Gray base		
26032060	\$70.00	Yellow	PDF										
26042060	\$70.00	Clear	PDF										
26052060	\$70.00	Blue	PDF										
26012074	\$70.00	Red	PDF		12 VAC/ VDC	70mA	1.0 A	–	-22 to 140°F [-30 to 60°C] IP66 UL Type 12	50,000h minimum	Polycarbonate cap	71 [2.50]	
26022074	\$70.00	Green	PDF								ABS/ Polycarbonate blend, Gray base		
26032074	\$70.00	Yellow	PDF										
26042074	\$70.00	Clear	PDF										
26052074	\$70.00	Blue	PDF										
26012075	\$62.00	Red	PDF		24 VAC/ VDC	66mA	1.6 A	–	-22 to 140°F [-30 to 60°C] IP66 UL Type 12	50,000h minimum	Polycarbonate cap	71 [2.50]	
26022075	\$62.00	Green	PDF								ABS/ Polycarbonate blend, Gray base		
26032075	\$62.00	Yellow	PDF										
26042075	\$62.00	Clear	PDF										
26052075	\$62.00	Blue	PDF										
Mini TwinFLASH Combi Visual - Audible													
46012060	\$119.00	Red	PDF	double flash (ON 30ms, Off 160ms, ON 30ms, Off 740ms, 1 Hz flash frequency) or EVS (Enhanced Visibility System) flashing (random flashing) 2 Tone: Continuous/ Pulse	115–230 VAC	60mA	2.0 A	95dB at 1m	-22 to 140°F [-30 to 60°C] IP66 UL Type 12	50,000h minimum	Polycarbonate cap	78 [2.75]	Push-in Terminal 24-16 AWG
46022060	\$119.00	Green	PDF								ABS/ Polycarbonate blend, Gray base		
46032060	\$119.00	Yellow	PDF										
46042060	\$119.00	Clear	PDF										
46052060	\$119.00	Blue	PDF										
46012074	\$119.00	Red	PDF		12 VAC/ VDC	82mA	2.0 A	95dB at 1m	-22 to 140°F [-30 to 60°C] IP66 UL Type 12	50,000h minimum	Polycarbonate cap	78 [2.75]	
46022074	\$119.00	Green	PDF								ABS/ Polycarbonate blend, Gray base		
46032074	\$119.00	Yellow	PDF										
46042074	\$119.00	Clear	PDF										
46052074	\$119.00	Blue	PDF										
46012075	\$103.00	Red	PDF		24 VAC/ VDC	98mA	3.0 A	95dB at 1m	-22 to 140°F [-30 to 60°C] IP66 UL Type 12	50,000h minimum	Polycarbonate cap	78 [2.75]	
46022075	\$103.00	Green	PDF								ABS/ Polycarbonate blend, Gray base		
46032075	\$103.00	Yellow	PDF										
46042075	\$103.00	Clear	PDF										
46052075	\$103.00	Blue	PDF										

Requires Mounting Adapter - sold separately



Visual Mini Tricolor 62mm Beacon EvoSIGNAL Series

Features

- Voltage rating 24VAC/VDC
- Push-in connection terminals
- 2 year warranty
- Base, tube, bracket and wall mount options
- Requires mounting adapter - sold separately
- IP66

Agency Approvals

- cULus file E164155
- CE

To obtain the most current agency approval information, see the Agency Approval Checklist section on the specific part number's web page.



26043075

Visual Mini Tricolor 62mm Beacon EvoSIGNAL Series Selection Chart												
Part Number	Price	Drawing Link	LED Color	Description	Voltage	Current	Starting/ Inrush	Operating Temp /Protection	Life Duration	Housing Material	Weight g [oz]	Connection
26043075	\$71.00	PDF	Red / Yellow / Green	permanent	24 VAC/ VDC	83mA	1.6 A	-22 to 140°F [-30 to 60°C] IP66 UL Type 12	50,000h minimum	Polycarbonate cap ABS/ Polycarbonate blend, Gray base	71 [2.50]	Push-in Terminal 24-16 AWG

Requires Mounting Adapter - sold separately

Visual Mini Audible Signal Horn 62mm EvoSIGNAL Series

Features

- Voltage ratings 115-230 VAC, 12 VAC/VDC, 24VAC/VDC
- Push-in connection terminals
- 2 year warranty
- 2 Tone continuous or pulse
- Base, tube, bracket and wall mount options
- Requires mounting adapter - sold separately
- IP66

Agency Approvals

- cULus file E164155
- CE

To obtain the most current agency approval information, see the Agency Approval Checklist section on the specific part number's web page.



16070060

Visual Mini Audible Signal Horn 62mm EvoSIGNAL Series Selection Chart												
Part Number	Price	Drawing Link	Description	Voltage	Current	Starting/ Inrush	dB Rating	Operating Temp /Protection	Life Duration	Housing Material	Weight g [oz]	Connection
16070060	\$68.00	PDF	2 Tone: 4kHz Continuous/ pulse	115-230 VAC	30mA	3.0 A	95dB at 1m	-22 to 140°F [-30 to 60°C] IP66 UL Type 12	5,000h minimum	Polycarbonate cap ABS/ Polycarbonate blend, Gray base	78 [2.75]	Push-in Terminal 24-16 AWG
16070074	\$68.00	PDF	2 Tone: 4kHz Continuous/ pulse	12 VAC/ VDC	30mA	0.8 A						
16070075	\$61.00	PDF	2 Tone: 4kHz Continuous/ pulse	24 VAC/ VDC	40mA	1.6 A						

Requires Mounting Adapter - sold separately

Visual And Audible-Visual Mini 62mm Beacon EvoSIGNAL Series Accessories

Accessory Overview

The EvoSIGNAL Mini Beacons require a mounting adapter.

Agency Approvals

- cULus E164155
- CE

To obtain the most current agency approval information, see the Agency Approval Checklist section on the specific part number's web page.

Visual And Audible-Visual Mini 62mm Beacon EvoSIGNAL Series Accessories							
Part Number	Price	Drawing Link	Description	Operating Temp /Protection	Housing Material	Weight g [oz]	Agency Approvals
26070001	\$5.25	PDF	WERMA EvoSIGNAL Mini series mounting base adapter, base mount, gray, ABS plastic. For use with WERMA EvoSIGNAL Mini industrial signal beacons, audible-visual signal beacons and audible signal horns.	-22 to 140°F [-30 to 60°C] IP66 UL Type 12	PC/ABS	13 [0.45]	cULus file E164155, RoHS
26070003	\$9.25	PDF	WERMA EvoSIGNAL Mini series mounting adapter, panel mount, M22 x 1.5mm thread type, 62mm diameter, 33mm height, gray, ABS plastic. For use with WERMA EvoSIGNAL Mini industrial signal beacons, audible-visual signal beacons and audible signal horns.			29 [1.02]	
26070004	\$9.25	PDF	WERMA EvoSIGNAL Mini series PG 29 mounting adapter, panel mount, PG29 thread type, gray, ABS plastic. For use with WERMA EvoSIGNAL Mini industrial signal beacons, audible-visual signal beacons and audible signal horns.			32 [1.12]	
26070005	\$11.50	PDF	WERMA EvoSIGNAL Mini series tube adapter, tube mount, 1/2in NPT thread type, 62mm diameter, 60mm height, gray, ABS plastic. For use with WERMA EvoSIGNAL Mini industrial signal beacons, audible-visual signal beacons and audible signal horns.			13 [0.45]	RoHS
26070006	\$6.25	PDF	WERMA EvoSIGNAL Mini series mounting bracket adapter with cable gland, wall mount, gray, ABS plastic. For use with WERMA EvoSIGNAL Mini industrial signal beacons, audible-visual signal beacons and audible signal horns.			39 [1.37]	
26070007	\$6.25	PDF	WERMA EvoSIGNAL Mini series mounting bracket adapter, wall mount, gray, ABS plastic. For use with WERMA EvoSIGNAL Mini industrial signal beacons, audible-visual signal beacons and audible signal horns.			30 [1.05]	cULus file E164155, RoHS



[26070001](#)



[26070003](#)



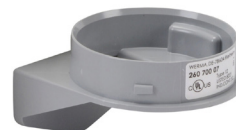
[26070004](#)



[26070005](#)



[26070006](#)



[26070007](#)